



## TERM 2 – Week 7 2026 IMPORTANT DATES

<b>WEEK 1</b> <b>APR 20 – APR 24</b> MONDAY TUESDAY THURSDAY FRIDAY	Smile Squad Dental - on-site <b>PUPIL FREE DAY</b> – Out of School Hours Care available STUDENTS RETURN <b>SCHOOL PHOTOS</b> <b>SCHOOL PHOTOS</b> BMPS Cross Country – Gr 4-6 1.45 pm - 3.00 pm (back oval) SATURDAY ANZAC DAY
<b>WEEK 2</b> <b>APR 27 – MAY 1</b> MONDAY TUESDAY  WEDNESDAY	<b>ASSEMBLY</b> Bacchus Marsh District Athletics – Masons Lane SCHOOL COUNCIL Prep Bunnings Mother’s Day Activity
<b>WEEK 3</b> <b>MAY 4 – MAY 8</b> THURSDAY  FRIDAY	EARLY YEARS Literacy/Numeracy Information Night Gr 2 Dino Kids – Ecolinc Video Incursion <b>MOTHER’S DAY STALL</b> PREP MOTHER’S DAY AFTERNOON TEA YEAR 2 – Sovereign Hill Excursion District Cross Country
<b>WEEK 4</b> <b>MAY 11 – MAY 15</b> MONDAY TUESDAY WEDNESDAY  FRIDAY	<b>ASSEMBLY</b> Grade 5 Sovereign Hill SCHOOL PHOTO CATCH-UP SESSIONS GRIP Student Leadership – Federation University - Mt Clear <b>EDUCATION SUPPORT RECOGNITION DAY &amp; COLOUR RUN</b>
<b>WEEK 5</b> <b>MAY 18 – MAY 22</b> TUESDAY THURSDAY	Girls AFL Grade 1 Werribee Zoo Excursion
<b>WEEK 6</b> <b>MAY 25 – MAY 29</b> MONDAY WEDNESDAY	<b>ASSEMBLY</b> Western Ranges Division Cross Country <b>Reconciliation Week Commences</b>
<b>WEEK 7</b> <b>JUN 1 – JUN 5</b> THURSDAY  FRIDAY	Parent Helpers Workshop – Prior to pick up at 2 pm Big Freeze In the Marsh – Wear Blue and Gold Coin - TBC Conclude Reconciliation Week – Smoking Ceremony – TBC World Environment Day – Loopy Litter Focus <b>Reconciliation Week Concludes</b>
<b>WEEK 8</b> <b>JUN 8 – JUN 12</b> MONDAY TUESDAY FRIDAY	<b>KINGS BIRTHDAY PUBLIC HOLIDAY</b> SCHOOL COUNCIL BMPSSA Winter Sport
<b>WEEK 9</b> <b>JUN 15 – JUN 19</b> THURSDAY FRIDAY	Western Metro Cross Country District Girls AFL
<b>WEEK 10</b> <b>JUN 22 – JUN 26</b> WEDNESDAY THURSDAY FRIDAY	<b>ASSEMBLY</b> Prep Farm Excursion THREE WAY INTERVIEW – Celebration of Learning 11am–6pm FINAL DAY OF TERM – 2.30 dismissal



## RECONCILIATION WEEK

To conclude Reconciliation Week, we hope to give our students an opportunity to take part in a traditional Smoking Ceremony this coming Friday. Should this Friday not be possible, the ceremony will move to Monday of week 9 or 10, and we will be sure to communicate details as all interested members of our school community will be welcome to take part.

Across this week, our students will enjoy a buddy activity where this year's theme, "ALL IN", a movement calling on all Australians to commit wholeheartedly to reconciliation every day, and not treat it like a spectator sport, will be discussed, and most importantly, actions will be committed to. Hoping you have had an opportunity to engage in some community events.



## VICTORIAN PRINCIPALS CONFERENCE

Friday, we returned from the Victorian Principals' Conference, where, across two days, Daniel Morris, Liz Stonka, Catherine Moody, Kate Zemunic (Principal Intern), and I took part in a variety of workshops and keynote addresses around the theme "Leading Together for Excellence and Equity". What was clear is that all Victorian Government Schools are grappling with many challenges, but most importantly, continue to embrace opportunities for our students as we work to prepare them for their future.

Of all the wonderful discussions I was fortunate to engage in, I was most inspired by the Preston South Primary School Acknowledgement of Country that I look forward to sharing at our next assembly.



## BIG FREEZE IN THE MARSH

This Thursday or Friday, we look forward to continuing our support for the fight against MND by inviting our students and staff to wear blue, their MND beanies or socks, and bring a gold coin donation that will go toward the Big Freeze in the Marsh grand total.

We may even get out the ice buckets 😊

**Stay tuned for confirmation of the day!**

I CHOOSE FIGHT

# BIG FREEZE

IN THE MARSH  
2026

BIG  
FREEZE 12

A FIGHT ~~MIND~~ EVENT



COBRAS

VS



SATURDAY  
6TH JUNE  
2026



MADDINGLEY  
PARK




FROM  
1:30PM



## PARENT HELPERS WORKSHOP

We look forward to facilitating our second Parent Helpers Workshop for interested parents and carers this Thursday at 2 pm.

- Thankyou for giving our office a call to confirm your attendance by 10 am on Wednesday



### Parent Helpers

We welcome parent helpers for reading in the classroom.

On Thursday the 4th of June at 2pm, there will be an information session on how best to support in the classroom and information about the requirements needed to be a classroom helper.

## IMPORTANT SMILE SQUAD UPDATE

Dear Parents,

We would like to inform you that Smile Squad families are welcome to contact us directly to arrange a dental appointment should your child require urgent assessment or care.

As we will be wrapping up our visit by the end of the term, we encourage you to get in touch if there are any concerns that you would like to be addressed.

- **We are available at the school on Tuesdays, Thursdays and Fridays. Parents can contact us on 0484 138 318 to arrange an appointment.**

**Otherwise, you can always attend our base clinic at:**

Melton Health  
195-209 Barries Road,  
Melton West  
Ph: 9747 7676  
Mon-Fri: 8:30 am to 5 pm

Regards from the Smile Squad Team

**Reception: 03 9747 7676 | Smile Squad: 0484 138 318**





# Nurture

## OUTDOOR PLAY SPACE

⇒ OPEN EVERY RECESS AND LUNCHTIME ⇐



Our Nurture Outdoor Play Space is a welcoming and supportive space where students can connect, play and feel safe.



Open every recess and lunchtime and facilitated by ES for supervision.



ES work in ways which allow students to connect with peers in socially interactive and positive ways that enhance their emotional wellbeing and connectedness to school.



At times the playground can be overwhelming for some students and they find comfort in this particular space.



Students have a range of activities they can engage in while being supported in a relational and positive way.

The Nurture Outdoor Play Space is an important place where students can recharge, build friendships and feel valued, included and supported.



A SAFE SPACE TO PLAY, CONNECT AND FLOURISH TOGETHER.



# RESILIENCE RIGHTS AND RESPECTFUL RELATIONSHIPS



## HELP SEEKING

The purpose of teaching help-seeking is to support students to become independent, resilient learners who know when and how to ask for help. It builds confidence, strengthens problem-solving skills, and ensures students can access the support they need to succeed academically, socially and emotionally.

This semester, students have also learned about Help-Seeking and explored Gender Norms and Stereotypes during RRRR sessions.



## GENDER NORMS & STEREOTYPES

Students consider the influence of gender norms on attitudes, opportunities and behaviour. They learn about gender equality, inclusion, human rights and the importance of relationships that respect people of all genders.



## SCHOOL CAPTAIN LEADERSHIP FORUM

We look forward to hearing all about our School Captains' experience and what inspired them as they lead forward, following their attendance at the **Moorabool Young Leaders Forum** late last week. Thankyou to Mr Scott Gillett for the organisation and to Mrs Jayde Clayton for accompanying our students.





## **CELEBRATING OUR COLOUR RUN TOP FUNDRAISERS**

The total raised was \$36,800 - \$22,000 for our school.

**The Top Fundraising Students** celebrated at our assembly last Monday are:

1. Marley Cavanagh	Grade 5B	\$1320
2. River Gaulke	Prep E	\$1045
3. Carter Smith	Grade 3M	\$860
4. Mason Hornsey	Grade 2H	\$820
5. Matilda Howson	Grade 1P	\$685

**Top Fundraising Class** - Grade 5B - \$2871



**2026  
COLOUR RUN  
\$22,000 RAISED**





## LOOPY LITTER BLITZ 1-8 JUNE

Students at BMPS are invited to participate in the Bacchus Marsh Platypus Alliance's first-ever Loopy Litter Blitz. Last week at assembly, we learned that items like hair ties, rubber bands, discarded fishing line, and other stringy/loopy litter left on the ground can wash into the river through the storm drains. This poses a threat to our local platypuses, turtles and other wildlife. Students are encouraged to pick up any loopy litter they find in the coming week. They can either bring it to the science room to add to our school total of collected loopy litter or snip and bin the rubbish at home. Families are invited to join in and submit individual tallies of collected rubbish from 1-8 June on the BMPA website.

- We also welcome photos to be shared via [bacchus.marsh.ps@education.vic.gov.au](mailto:bacchus.marsh.ps@education.vic.gov.au) so we can celebrate in our Update.

**KEEP PLATYPUS SAFE FROM LOOPY LITTER**

**1<sup>ST</sup> - 8<sup>TH</sup> JUNE 2026**

**JOIN THE LOOPY LITTER BLITZ**

**SEIZE IT**

**SNIP IT**

**BIN IT**



 [www.platypusalliance.org.au/loopylitterblitz](http://www.platypusalliance.org.au/loopylitterblitz)



## WESTERN RANGES DIVISION CROSS COUNTRY

Last Wednesday, 14 students attended the Division Cross Country at Masons Lane. This event hosted the fastest runners from across the Melton, Bacchus Marsh and Macedon Ranges areas. Students competed in races over 2 km (10 years) or 3 km (11 years, 12/13 years). We are very proud of our students who completed their races and put in a fantastic effort on the day.

Four students finished in the top 10 and now qualify for the Regional Cross Country at Keilor Athletics Track and Precinct on Monday, 15<sup>th</sup> June.

Kingsley Whiting 10 years (6<sup>th</sup>)  
Hunter Robinson – 11 years (5<sup>th</sup>)  
Billy Basten – 11 years (7<sup>th</sup>)  
Grace Bonnici – 12 years (9<sup>th</sup>)

We always appreciate our parents who are able to come along to support, as well as Sally Gillard for being our Team Manager!

Dave Champness  
PE & Sports Coordinator





Congratulations to Corey Hall, BMPS Music Teacher, Belinda Horne, BMPS Wellbeing Educator and Jayne Oliver, BMPS parent, for the part you all played in today's **Encore Sessions - Animated Royalty** performed by The Bacchus Marsh Theatre Company. We look forward to what will follow – BRAVO!







## **IMPORTANT 2027 FOUNDATION/PREP ENROLMENT TIMELINE**

### **Apply now to enrol your child in Foundation (Prep) for 2027**

All Victorian government primary schools follow a statewide timeline for enrolling in Foundation (Prep) for the 2027 school year.

- If you have a child starting primary school in 2027, it's time to enrol. Make sure to submit your enrolment application by **Friday, July 31 2026**.

If you are enrolling the sibling of a student at our school for Foundation in 2027, and both children will be attending our school at the same time, your child is prioritised for a place at our school.

It is important to submit your enrolment application to us on time as it will ensure your child is included in all transition activities if offered enrolment at our school. This also allows us to plan our classrooms, staffing and transition activities, and ensures your child has the best start to school.

For more information, please read about how to enrol your child in Foundation at [Enrolling in Foundation \(Prep\) | vic.gov.au](https://www.vic.gov.au/enrolling-in-foundation-prep)

If you would like to enrol your child in Foundation (Prep) in 2027, please contact our school office on 03 5367 2745 or [bacchus.marsh.ps@education.vic.gov.au](mailto:bacchus.marsh.ps@education.vic.gov.au) to book a school tour or request an application form.

## **IMPORTANT!**

### **SEMESTER 1 REPORTING CHANGES DUE TO INDUSTRIAL ACTION**

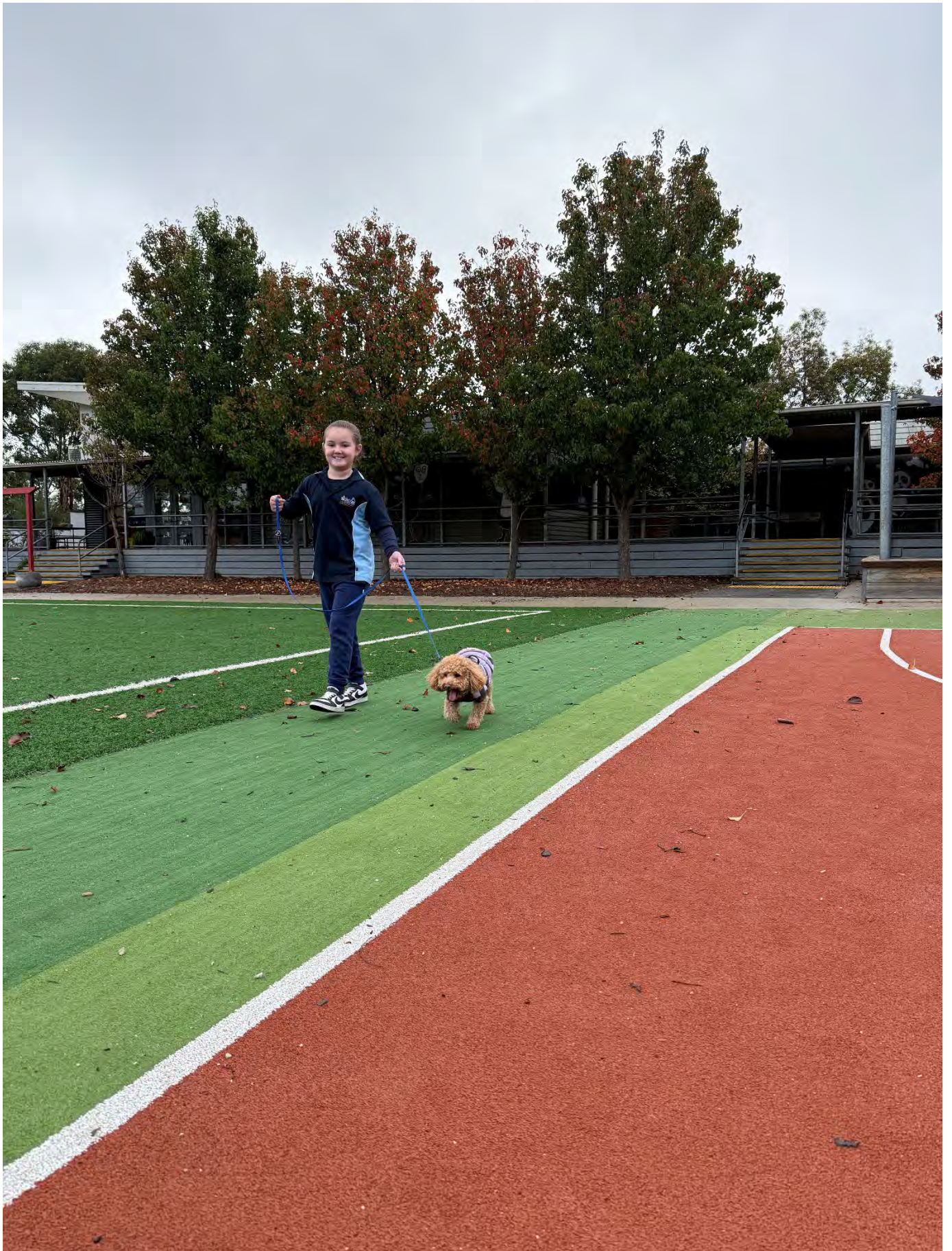
We will be providing student achievement reports for Semester 1 this year, and the reports will be distributed at our 3 Way Celebration Interview in the last week of term on Thursday, June 25.

The reports will continue to provide important details of student learning attainment through a dot point, but full individualised descriptive comments, including personal and social learning overviews, will not be included as a result of industrial action taken earlier this term by the Australian Education Union.

Our students P-6 will all continue to write a personal reflection, and this will be included in their portfolio.

Please do not hesitate to make contact if you have any questions or queries relating to Semester One Reports.







## ONGOING CONSISTENT MESSAGES:

### DROP OFF ZONE – off Young Street

- CARS **MUST NOT PARK** IN THE DROP-OFF ZONE AS IT IS A KISS AND DROP AREA ONLY.
- VEHICLES ARE NOT TO BE LEFT UNATTENDED IN THIS SPACE
- PLEASE DO NOT ACCESS THE STAFF CARPARK AREA AT ANY TIME.

## LERDERDERG STREET ENTRANCE

Thank you for your ongoing support with these changes:

- STUDENTS DO NOT USE THE FRONT ENTRANCE AS A THOROUGHFARE INTO OR OUT OF THE SCHOOL
- THE DRIVEWAY GATE ALONGSIDE THE ART ROOM WILL BE THE BREAKFAST CLUB AND MORNING ENTRANCE POINT
- PREP ENTRANCE WILL BE OPEN FROM 8.35 AM
- STUDENTS ARRIVING BEFORE 8.35 AM ARE ASKED TO WAIT IN THE UNDERCOVER AREA UNTIL DISMISSED.
- **FORMAL YARD SUPERVISION COMMENCES AT 8.35 AM**

## BUS ZONES ON LERDERDERG STREET

All of the yellow line markings on the north and south sides of the street indicate **NO PARKING** before or after school to allow our buses to safely enter and exit the zone to collect our students.

Pulling up at the Prep entrance gate to collect students on Lerderderg Street is contravening the safety signage and impacting pedestrian and vehicle vision on our crossing. This blatantly ignores the safety rights of our school community.



**PLEASE DO NOT PARK  
OVER DRIVEWAYS.**

**OUR NEIGHBOURS  
HAVE ALWAYS  
APPRECIATED THE  
RESPECTFUL MANNER  
IN WHICH OUR  
COMMUNITY LIVE  
OUR VALUES**



## ALWAYS REACH OUT

- Thank you to parents and carers for reaching out to your child's classroom teacher or any of our staff below, if we can assist in any way.

**Melinda Williams** – Principal  
**Leanne Holt** – Business Manager

## Wellbeing:

**Daniel Morris** - Assistant Principal - Wellbeing & Engagement / Disability Inclusion  
**Bec Blokland** - Disability Inclusion Co-ordinator

**Liz Stonka** – Assistant Principal – Daily Organisation /Student Medical Health & Wellbeing/Social Emotional Learning Curriculum

**Tiff O'Brien** – Leading Teacher – Mental Health in Primary Schools – Trauma Informed Practice - Art-Therapy

**Belinda Horne** - Wellbeing Educator

## Literacy and Numeracy:

**Catherine Moody** – Assistant Principal - Curriculum / Teaching and Learning

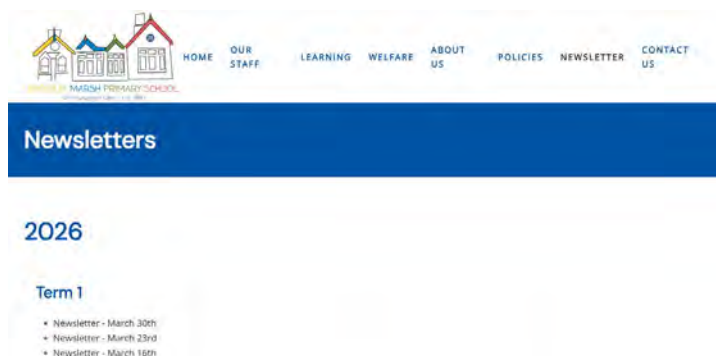
**Kirsty Younger** - Leading Teacher – Literacy

**Janaya Walker and Jayde Clayton** – Leading Teachers – Numeracy

## ONGOING ACCESS TO OUR WEEKLY UPDATES

Note – All Updates are saved to our website for easy access at any time across the term.

<https://bacchusmarshps.vic.edu.au/newsletter>



All the best for a great week 7, from the BMPS team.

## Supporting Growth, Confidence & Wellbeing

Inspiring Potential Life Coaching



## Empowering Women To Thrive

**Feeling disconnected from yourself?** Caught in the whirlwind of endless to-do lists or weighed down by negative self-talk?

You're not alone — and that's where our journey begins.

Join the Empowering Women To Thrive program — a 10-session journey of self-discovery and growth designed to help you reconnect, rebuild confidence, and create space for yourself without guilt. Learn to let go of the past, reshape your inner story, and set healthy boundaries so you can live with more clarity, gratitude, and fulfilment.

What's Included:

- 10 x Coaching Sessions (via Zoom) – Personalised guidance and support
- Worksheets & Resources – Tools to support your growth
- Private Facebook Group – A community of like-minded women
- Weekly Check-ins – Stay accountable and celebrate wins
- Welcome Gift Pack – A special token to mark your journey

Rediscover your confidence, balance, and joy — and start thriving today.

## 2026 Women's Seasonal Retreats

Element of You is a four-part journey designed to help you reconnect with yourself throughout the rhythm of the year. Each seasonal retreat blends intentional activities, meaningful reflection, creativity, and nurturing space to support your personal growth. With thoughtful gifts, guided practices, and a full-day immersive experience from 10:00 a.m. to 4:00 p.m., these retreats invite you to explore your inner landscape in harmony with the Earth's natural cycles—location Ballan Scout Hall. Each retreat is \$150 per retreat, or contact us for a special series discount.

Join the full series or simply come along to the seasons that speak to you. Contact us to learn more.



📍 Based in Ballan – sessions available in person or online  
 🌐 [www.inspiringpotentiallife.com](http://www.inspiringpotentiallife.com)  
 ☎️ 0438 891 579

### Get in Touch Today

To find out more contact us by visiting our website.





**NEW**

# PLAYERS WANTED

**WE ARE SEEKING ADDITIONAL PLAYERS  
FROM 5-19 YEARS OLD**

**ENJOY THE FUN & EXCITEMENT OF  
BASKETBALL, FOR MORE INFO EMAIL:  
[admin@bmbasketball.org.au](mailto:admin@bmbasketball.org.au)**

**SATURDAY  
U8-U14s**

**TUESDAY  
U16-U18 BOYS  
U16-U20 GIRLS**

**THURSDAY  
U21 BOYS, SENIOR  
MEN & WOMEN**

Western VACCA

# Deadly Kids

## Come along to our Deadly Kids Melton Group!

For children aged 8-12

A range of activities delivered in a culturally safe and supportive way participate in peer to-peer learning and interaction to boost their confidence with navigating their relationships.

## Fortnightly on Tuesdays

(Group 1 from February 3<sup>rd</sup> / Group 2 from February 10<sup>th</sup>)

**Time:** 4.00pm – 5.30pm

### Kurunjang Community Hub

33 Mowbray Cres, Kurunjang VIC 3337

If transport is needed please contact:

**Lillyarnna G**

e. [lillyarnnaG@vacca.org](mailto:lillyarnnaG@vacca.org)

VACCA Melton

43 Bakery Square, Melton VIC 3337

p. (03) 8746 2776

VACCA Werribee

Ground Floor, 75-79 Watton Street, Werribee VIC 3030

p. (03) 9742 8300

w. [vacca.org](http://vacca.org) e. [vacca@vacca.org](mailto:vacca@vacca.org)

    @vaccaorg



**VACCA**

VICTORIAN ABORIGINAL CHILD  
AND COMMUNITY AGENCY

WESTERN



Western VACCA - Melton

# Koala Kubs Koorie Club



## EVERY THURSDAY

Starting Thursday 12<sup>th</sup> February  
(During School Terms)

**Time:** 3.30pm - 5.00pm

**Location:** Binap Primary School  
11 Grand Scenic Drive, Brookfield VIC 3338

Welcoming all Aboriginal and Torres Strait Islander  
students from Prep to Grade 6 across the Melton area

Only 20 spots available

Family Friendly

Light snacks will be provided each session

Please RSVP attendance by contacting:

e. [vaccawestkooriwellbeingways@vacca.org](mailto:vaccawestkooriwellbeingways@vacca.org)

p. (03) 9742 8300 m. 0428 951 597



**VACCA**  
VICTORIAN ABORIGINAL CHILD  
AND COMMUNITY AGENCY  
WESTERN

VACCA Melton

43 Bakery Square, Melton VIC 3337

p. (03) 8746 2776 w. [vacca.org](http://vacca.org) e. [vacca@vacca.org](mailto:vacca@vacca.org)



@vaccaorg

Early Childhood Development

# KOORIE KIDS PLAYGROUP



Come and join us at VACCA's  
Koorie Kids Playgroup in a culturally  
safe, fun and empowering environment for  
families with children aged 5 years and under.

Koorie Kids Playgroup is a great place for children and their Mums, Dads and Carers to:

- Gather with other Koorie families • Make new friends • Hear stories
- Participate in cultural arts, crafts and dance • Express creativity • Learn about culture
- Get to know other Koorie Kids in the area

Playgroup will provide a healthy snack at each session.

For further information please contact  
VACCA Melton (03) 8746 2776 or VACCA Werribee (03) 9742 8300

Please send referrals directly to  
[vaccawestkoriekidsplaygroup@vacca.org](mailto:vaccawestkoriekidsplaygroup@vacca.org)

## DURING SCHOOL TERMS

**Mondays** 12:00pm - 2:00pm **St Albans Koorie Kids Playgroup**  
Westvale Community Centre, 45 Kings Rd, **Kings Park** VIC 3021

**Tuesdays** 12:00pm - 2:00pm **Point Cook Koorie Kids Playgroup**  
153 Saltwater Promenade, **Point Cook** VIC 3030

**Wednesdays** 12:30pm - 2:30pm **Melton Koorie Kids Playgroup**  
Botanica Springs Children's and Community Centre, 249 Clarkes Road, **Brookefield** VIC 3338

**Thursdays** 12:00pm - 2:00pm **Wyndham Vale Koorie Kids Playgroup**  
Wunggurrwil Dhurrung Community Centre  
19 Communal Road, **Wyndham Vale** VIC 3024

### VACCA Melton

43 Bakery Square, Melton VIC 3337  
p. (03) 8746 2776

### VACCA Werribee

Ground Floor, 75-79 Watton Street, Werribee VIC 3030  
p. (03) 9742 8300

w. [vacca.org](http://vacca.org) e. [vacca@vacca.org](mailto:vacca@vacca.org)



@vaccaorg



**VACCA**

VICTORIAN ABORIGINAL CHILD  
AND COMMUNITY AGENCY

WESTERN



**Western VACCA**

# Indigenous Horticulture Program

**Running weekly on Tuesdays**

**Starting Tuesday 10<sup>th</sup> February**

**Session times: 10.00am–2.00pm**

**ACAH Demonstration Farm**

**25 Whites Rd Werribee South VIC 3030**

**In association with ACAH, VACCA  
are offering Certificate IV in Production  
– Specialising Indigenous Food Production**

**This program is suitable for ages 14+ years.**

**For more information or to RSVP please contact:**

**e. [vaccawestkooriwellbeingways@vacca.org](mailto:vaccawestkooriwellbeingways@vacca.org)**

**p. (03) 9742 8300 m. 0428 951 597**



**VACCA Melton**  
43 Bakery Square, Melton VIC 3037  
p. (03) 8746 2776

**VACCA Werribee**  
Ground Floor, 75-79 Watton Street, Werribee VIC 3030  
p. (03) 9742 8300

**W. [vacca.org](http://vacca.org) e. [vacca@vacca.org](mailto:vacca@vacca.org)**



**VACCA**  
VICTORIAN ABORIGINAL CHILD  
AND COMMUNITY AGENCY

**WESTERN**



# Western VACCA WOMENS GROUP

A culturally safe space for having a yarn  
and sharing stories whilst participating  
in cultural activities.

Runs weekly from  
Thursday 12<sup>th</sup> February

**Time:** 9.30am - 1.30pm

**Wunggurwil Dhurrung Community Centre**  
19 Communal Road, Wyndham Vale, VIC 3024

The program welcomes all Aboriginal and Torres Strait Islander women aged 18 years and up.

**For more information or to RSVP please contact:**

**e.** [vaccawestkooriwellbeingways@vacca.org](mailto:vaccawestkooriwellbeingways@vacca.org)

**p.** (03) 9742 8300

**m.** 0428 951 597



**VACCA Melton**  
43 Bakery Square, Melton VIC 3337  
**p.** (03) 8746 2776

**VACCA Werribee**  
Ground Floor, 75-79 Watton Street, Werribee VIC 3030  
**p.** (03) 9742 8300

**w.** [vacca.org](http://vacca.org) **e.** [vacca@vacca.org](mailto:vacca@vacca.org)

    @vaccaorg



**VACCA**  
VICTORIAN ABORIGINAL CHILD  
AND COMMUNITY AGENCY  
WESTERN

# Cafs Early Help Program

## Onsite supports available for your family!

Our Cafs Early Help Practitioners are working with schools to provide support to parents, carers and children in their communities!

Come have a chat with our onsite practitioner if your seeking more information about supports in the community for your child and family!

We help families with:

- Exploring GP and Paediatrician assessment.
- Connecting you to local professionals surrounding your child's developmental needs.
- Exploration and advice for accessing professional supports regarding Neurodiversity.
- Community engagement
- And more!



See your school for a warm introduction to our onsite team!

## Autism Connect

Autism Connect is an expansion of Amaze's Autism Advisor service delivered in Victoria for 12 years, helping over 20,000 people.

Autism Connect is available to anyone seeking support related to autism. The service was created for autistic people seeking guidance around diagnosis and services, their families or friends, and anyone supporting an autistic adult or child in education, health settings or workplaces.

**"I got diagnosed at age 40 and I found that really enlightening and validating. You've got the ability to send a five-second message and then get a human response. They were friendly, patient and empathetic. They were really just nice to deal with on the phone and it felt like the easiest thing ever."**

**- Catherine, Autistic mother of 2 autistic boys.**



**For more information, visit  
[amaze.org.au/autismconnect](https://amaze.org.au/autismconnect)**



**If you need an interpreter, contact the TIS National Contact Centre on 131 450 and ask to speak to Autism Connect on 1300 308 699.**

**Autism Connect is funded by the Australian Government Department of Social Services**



# SHINDO KARATE

心道空手



BACCHUS MARSH, MELTON, WEIR VIEWS & GISBORNE

**WHAT WE OFFER:**  
**AGE SPECIFIC PROGRAMS**  
**FAMILY FRIENDLY ENVIRONMENT**  
**GOVERNMENT ACCREDITED INSTRUCTORS**



*All from the beginning, a free spirit*

**CONTACT US TODAY!**



**0425 759 164**



**SHINDO KARATE ACADEMY  
BACCHUS MARSH  
MELTON & GISBORNE**



**JUST FOR THE GIRLS**

**nab AFL Auskick**

**GOOD CLEAN FUN**

**PLAY.AFL/AUSKICK**

**DARLEY ALL GIRLS AUSKICK GROUP**

**Darley Park Reserve, Darley**

**MONDAYS 5PM - 6PM**

**Starts 20<sup>th</sup> April 2026**





**ANYBUDDY CAN PLAY**

[PLAY.AFL/SUPERKICK](https://play.afl.com.au/superkick)

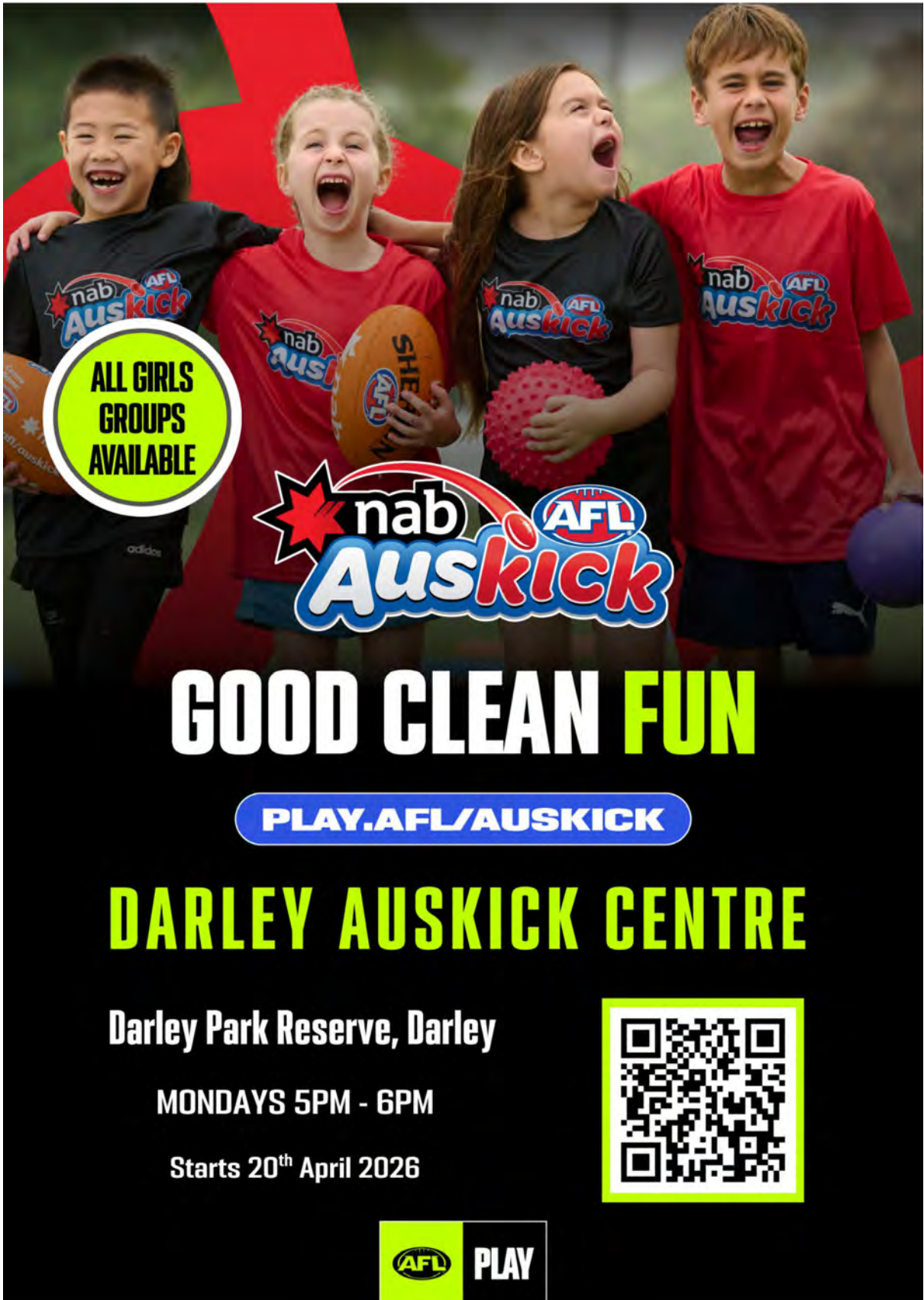
**DARLEY SUPERKICK CENTRE**

**Darley Park, Darley**

**Mondays 5PM - 6PM**

Starts 20<sup>th</sup> April 2026





ALL GIRLS  
GROUPS  
AVAILABLE



GOOD CLEAN FUN

PLAY.AFL/AUSKICK

DARLEY AUSKICK CENTRE

Darley Park Reserve, Darley

MONDAYS 5PM - 6PM

Starts 20<sup>th</sup> April 2026

